



Linden Avenue

Tuxford, Newark, NG22 0JS

£190,000



Nestled on Linden Avenue in the charming town of Tuxford, Newark, this delightful detached bungalow offers a perfect blend of comfort and convenience. With two well-proportioned bedrooms, this property is ideal for small families, couples, or those seeking a peaceful retirement retreat.

The location is particularly advantageous, as it is situated close to a variety of amenities, making daily errands easily accessible. Whether you are looking for local shops, parks, or community services, everything you need is just a stone's throw away.

This bungalow not only offers a comfortable living space but also the ease of single-storey living, with its modern features and prime location, this property presents an excellent opportunity for anyone looking to settle in a friendly and convenient neighbourhood.

Do not miss the chance to make this lovely bungalow your new home.



Description

NO UPWARD CHAIN - Located on the popular Linden Avenue estate within walking distance to the schools, shops and on the bus route this two bedroom detached bungalow is ideal for first time buyers, investors or people wanting to down size. The property briefly comprises of lounge / kitchen, two bedrooms and bathroom. Open frontage and an enclosed rear garden with garage.

Entrance Hall

The property is entered through the side upvc door into the hallway leading through into the kitchen / lounge.

Kitchen / Diner / Lounge 23'0" x 14'9" (7.02m x 4.52m)

The open plan kitchen and living room is a bright spacious room with two double glazed front facing windows providing ample natural light, laminate flooring, wall lights and the modern kitchen area is fitted with a range of cream wall and base units with complimenting worktops, with tiled splashbacks, integrated appliances including an electric oven and hob with an extractor hood above, dishwasher, fridge/ freezer and further space and plumbing for additional appliances, an inset sink with a mixer tap and drainer, and a central island with space for a breakfast bar with tiled floor to the kitchen area. Off the lounge is an airing cupboard housing the electric boiler and plumbing for a washing machine.

Bedroom One 12'0" x 11'7" (3.66m x 3.54m)

A double bedroom rear facing with triple wardrobe with sliding doors, laminate flooring and radiator.

Bedroom Two 10'10" x 8'4" (3.32m x 2.56m)

A double bedroom rear facing with laminate flooring and radiator.

Bathroom 7'4" x 7'1" (2.24m x 2.18m)

A three piece fitted bathroom suite comprising of a low-level soft closing WC and wash hand basin in a vanity unit, panelled bath with an overhead shower and glass screen, part aqua board walls, tiled floor and recessed lighting.

Outside

To the front is an open plan gravel frontage and shared driveway leading to the garage needing slight attention to the roof with an up and over door, side access leading to the enclosed lawn area.

Additional Information

The property benefits from a 4kwh owned solar system.

Disclaimer

1. MONEY LAUNDERING REGULATIONS: Intending purchasers will be asked to produce identification documentation at a later stage and we would ask for your co-operation in order that there will be no delay in agreeing the sale.
2. General: While we endeavour to make our sales particulars fair, accurate and reliable, they are only a general guide to the property and, accordingly, if there is any point which is of particular importance to you, please contact the office and we will be pleased to check the position for you, especially if you are contemplating travelling some distance to view the property.
3. Measurements: These approximate room sizes are only intended as general guidance. You must verify the dimensions carefully before ordering carpets or any built-in furniture.
4. Services: Please note we have not tested the services or any of the equipment or appliances in this property, accordingly we strongly advise prospective buyers to commission their own survey or service reports before finalising their offer to purchase.
5. THESE PARTICULARS ARE ISSUED IN GOOD FAITH BUT DO NOT CONSTITUTE REPRESENTATIONS OF FACT OR FORM PART OF ANY OFFER OR CONTRACT. THE MATTERS REFERRED TO IN THESE PARTICULARS SHOULD BE INDEPENDENTLY VERIFIED BY PROSPECTIVE BUYERS OR TENANTS. NEITHER Clark Estates OR ANY OF ITS EMPLOYEES OR AGENTS HAS ANY AUTHORITY TO MAKE OR GIVE ANY REPRESENTATION OR WARRANTY WHATSOEVER IN RELATION TO THIS PROPERTY.

Purchaser information -The Money Laundering, Terrorist Financing and Transfer of Funds(Information on the Payer) Regulations 2017(MLR 2017) came into force on 26 June 2017. Clark Estates require any successful purchasers proceeding with a property to provide two forms of identification i.e. passport or photocard driving licence and a recent utility bill or bank statement. We are also required to obtain proof of funds and provide evidence of where the funds originated from. This evidence will be required prior to Clark Estates removing a property from the market and instructing solicitors for your purchase.

Third Party Referral Arrangements - Clark Estates have established professional relationships with third-party suppliers for the provision of services to Clients. As remuneration for this professional relationship, the agent receives referral commission from the third-party companies. Details are available upon request.

These particulars, whilst believed to be accurate are set out as a general outline only for guidance and do not constitute any part of an offer or contract. Intending purchasers should not rely on them as statements of representation of fact, but must satisfy themselves by inspection or otherwise as to their accuracy. No person in this firms employment has the authority to make or give any representation or warranty in respect of the property.

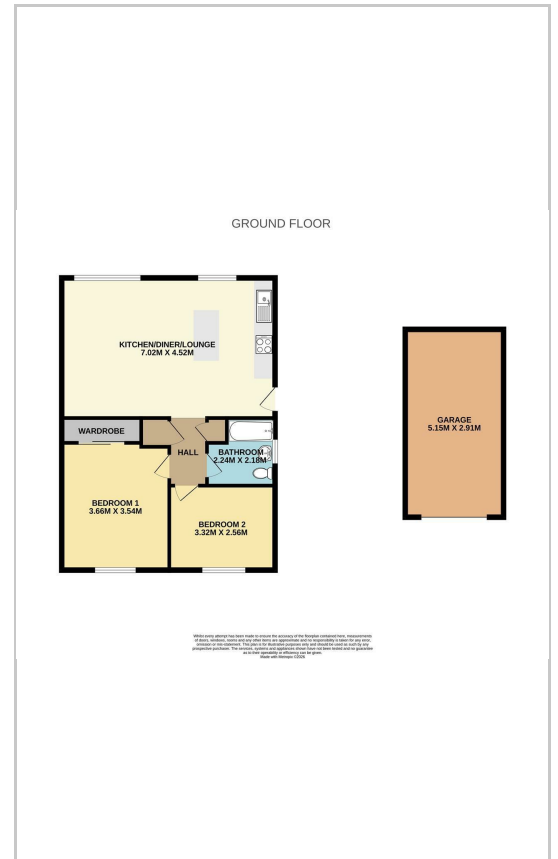
14-16 Eldon Street, Tuxford, NG22 0LH

Tel: 01777 801 901 Email: dawn@clark-estates.co.uk www.clark-estates.co.uk

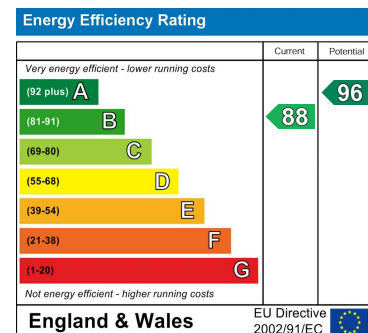
Area Map



Floor Plans



Energy Efficiency Graph



14-16 Eldon Street, Tuxford, NG22 0LH

Tel: 01777 801 901 Email: dawn@clark-estates.co.uk www.clark-estates.co.uk